

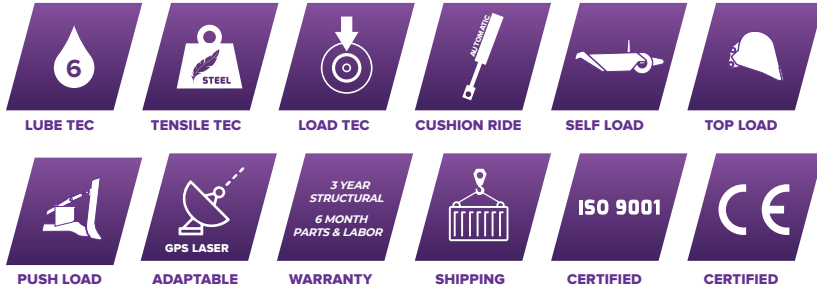


## K-TEC 1233

The K-Tec 1233 is a ruggedly versatile earthmover. Its modular, bolt-together design, allows for affordable international container shipping, and minimal maintenance. This strong, multi-purpose machine, carrying a heaped capacity of 33 cubic yards / 25.23 cubic metres is a powerful worker in any soil condition or job site application. The 1233 can also be converted into a Lead Train, Rear Convertible, or even an ADT scraper to have your equipment fleet grow with your company.



## K-TEC 1233 SCRAPER FEATURES



## 1233 SPECIFICATIONS

General Specifications	Standard	Metric
Heaped Capacity (ISO)	33 Cubic Yards	25.23 Cubic Metres
Struck Capacity	19.7 Cubic Yards	15.06 Cubic Yards
Max Loading Rating	80,000 lbs	36,287 kgs
Bucket Dimensions	12' W x 4' 3" H x 12' 10" L	3.66m W x 1.29m H x 3.91m L
Cutting Width	12'	3.66m
Cutting Edge	3-Piece Blade	3-Piece Blade
Gate Opening	6' 8"	2.03m
Turning Radius	26'	7.92m
Gate Cylinders	5" x 26"	127mm x 660mm
Lift Cylinders	5.5" x 32"	140mm x 813mm
Ejector Cylinder	5.5" x 76"	140mm x 1,930mm
Cutting Edge Clearance	28"	0.71m
Hitch Pin to Rear Axle Length	31' 5"	9.58m
Rack Height (Tilttable)	4'	1.22m
Weight Distribution	Tongue: 25%, Wheels: 75%	Tongue: 25%, Wheels: 75%
4 Tires	23.5 R25 Radial	23.5 R25 Radial
Horsepower Required	350 HP +	257 kW +
Wrap Around Mud Scrapers	Standard	Standard

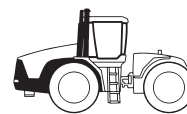
Transport Dimensions	Standard	Metric
Overall Width	14'	4.27m
Overall Height	10'	3.04
Overall Length	38' 5"	11.71m
Shipping Weight	36,800 lbs	16,692 kgs
Overseas Shipping	40' Highcube container	40' Highcube container

Optional Upgrades	
Radial Tires (4)	26.5 R25 Radial (E-3/ L-3)
Brake System	4 or 8 Caliper Disc System
Skid Shoe System	Provides superior stabilization for precision finish cut
Height Gauge	Increases cutting depth visibility

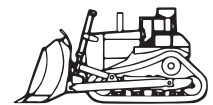
Specifications are subject to change without notice.



## RECOMMENDED POWER UNITS



Agricultural Tractor  
350HP+ / 260KW+



Dozer  
310-436HP+ / 231-325KW+



Construction Tractor  
400HP+ / 298KW+