

K-SERIES
950K CRAWLER DOZER



JOHN DEERE



**MOVE
MORE**

THE
950K CRAWLER DOZER



AND



RELIABLE

+



PRODUCTIVE

HAVE IT BOTH WAYS.

POWERFUL
D EFFICIENT



IN A CLASS BY ITSELF.

Your opinion matters. So when you told us you wanted a reliable, high-production dozer in the 260–360-hp category, we listened. Building on the success of our popular production-class 1050K, our versatile 950K Dozer is in a class all its own. Big enough to handle mass-excavation and road-building tasks, it's equally adept at fine grading and site development.

All K-Series Dozers are designed and built using quality parts and components by John Deere in Dubuque, Iowa. The 950K delivers the exceptional reliability and performance in high-production applications you've come to expect from Deere. And it's backed by our legendary dealer network.

ROAD WARRIOR.

ATTACKS ROAD BUILDING AND OTHER APPLICATIONS

The 950K rounds out the John Deere dozer line with an excellent combination of power and efficiency. This highly capable crawler puts more power to the ground than previous models. And the Eco mode feature regulates engine rpm to burn less fuel than conventional powertrains.

Eco mode

Standard Eco mode burns up to 20-percent less fuel than conventional torque-converter transmissions. It automatically adjusts engine rpm and transmission settings based on load without sacrificing performance.

Grade-control system ready

The 950K Dozer is factory equipped with fully integrated Topcon 3D-MC² grade-control components and is also set up for Trimble and Leica systems. Simply plug in the components, calibrate, and go to work.

Low-effort control

A single lever provides low-effort control of steering, forward/reverse travel, and ground speed. Employing a thumb-actuated travel-speed switch, the lever is also detented so it doesn't require an operator's constant touch or attention.

More power to the ground

Hydrostatic transmission delivers 15-percent more power to the ground than conventional torque-converter transmissions.



ECO MODE REDUCES FUEL CONSUMPTION

BY UP TO 20%



STANDOUT FEATURE



NOW AN EVEN
BIGGER
DEAL.

NEVER ENOUGH.

UNPRECEDENTED BLADE PERFORMANCE

Designed and manufactured at the world-class John Deere Dubuque Works, the 950K is the largest crawler dozer on the market to be equipped with a six-way power/angle/tilt (PAT) blade*, enabling impressive levels of dozing and finish grading. Increased engine power combined with the versatility of the PAT blade allow this single production-class machine to work where multiple pieces of equipment were needed to get things done before.

**PAT blade available only with LGP track configuration.*

Heavy-duty power

An additional 3,800 lb. of machine weight with PAT blade durably strengthens the C-frame. Increased engine power of 280 hp and extended final drives help maintain full machine muscle and blade speed.

High-mount cylinders

PAT blade-lift cylinders feature a high-mount design for commonality with the structures and cooling package of the 950K outside-dozer (OSD) blade, easing fleet maintenance and component costs.

Loaded for productivity

8.6-cu.-yd. PAT blade capacity enables you to doze, grade, and move more, more capably.

Cut a wider swath

PAT blade width of 184 in. covers more ground in fewer passes. Overall machine length with optional triple-shank ripper is 7-in. shorter with PAT, for greater jobsite maneuverability.

Pitch perfect

Adjustable to three mount locations, blade pitch can be controlled from the cab via optional hydraulic power pitch. Programming preset blade-pitch positions is effortless with the push-button-activated return-to-pitch feature.

Angle of attack

Inspired by pipeliners, the redesigned mechanical-angle blade is built by John Deere to withstand the most demanding applications on pipeline rights-of-way.



**INDUSTRY-
1ST 6-WAY
PAT BLADE**
IN A DOZER OF THIS SIZE



MORE RIPPING PRODUCTIVITY

3-SHANK RIPPER CAN BE PITCHED ON THE GO



Ride in style

Creature comforts in the fully enclosed cab include low-effort controls that deliver reliably predictable response, enhanced LCD color monitor featuring push-button access to a wealth of machine info, durable sealed-switch module that enables fingertip control of machine functions including keyless start, deluxe suspension high-back adjustable seat, and easy-to-appreciate HVAC system.

Stay on track

Track on ground of 126.5 in. for the standard configuration and 135.1 in. for LGP provides reliable stability in difficult terrain.

Programmable return to pitch

Hydraulic dual-tilt option allows the operator to control blade pitch from the cab — perfect for applications where pitch must be adjusted multiple times in a single push. Using programmable return-to-pitch settings, the operator can preset blade-pitch positions, which can be activated at the touch of a button.

Increased productivity

The 950K delivers exceptional productivity in slot trenching, ripping, and spreading applications.

Efficient ripping

More track on the ground combined with efficient power management adds up to increased ripper productivity. Triple-shank ripper can be pitched on the go, further boosting productivity.

Configured for your application

Rock racks, blade skins, and push plates are now available as options from the factory.



LET 'ER RIP.

*THE 950K MAKES A BIG PRODUCTION
OUT OF EVERYTHING*

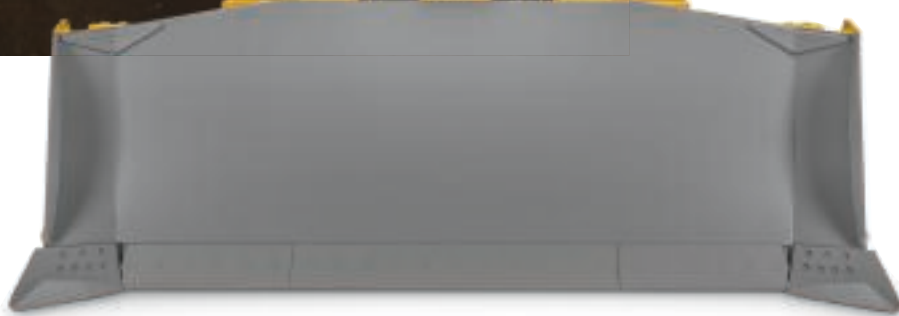
Boasting superb power, weight, and track on ground, the 950K delivers the performance you need for high-production applications. And who wouldn't be more productive in this quiet, spacious walk-through cab loaded with comfort-crafted amenities.

NOTHING RUNS LIKE A DEERE



DESIGNED AND MANUFACTURED IN THE U.S.A.

The 950K was designed and built with state-of-the-art tools and techniques by a quality-conscious workforce at our world-class facility in Dubuque, Iowa. And it's backed by our legendary dealer network of parts and service support.



ONE-DAY PARTS AVAILABILITY*

**SAME-DAY SHIPPING IS CONTINGENT ON
CARRIER AVAILABILITY AND TIME OF ORDER.*

Durable undercarriage

Heavy-duty undercarriage is sealed, lubricated, and built to last. Its no-nonsense oval-track design has only one wear-causing forward-travel flex point, for longer life.

Hydraulic-driven cooling-system fan

Available reversing hydraulic-powered fan automatically back-blows the cooler cores at preset intervals. When conditions demand more frequent cleaning, simply press a button to actuate the reversing cycle.

Interchangeable wear parts

Most wear parts such as cutting edges and end bits are interchangeable with other competitive machines, so you only have to stock one part if you run a mixed fleet.

Fluid-efficient, reliable FT4 diesel

EPA Final Tier 4 (FT4)/EU Stage IV engine meets emission regulations without sacrificing power or torque.

ONE-STOP SHOP

WE'VE GOT YOU COVERED.

Simple to service

Access to dipsticks, fill tubes, maintenance-free batteries, and vertical filters is wide open. Same-side grouped service points make quick work of the daily routine.

Quick refills

Fast-fuel and quick fluid-service options help maximize uptime while ensuring clean refills — perfect for high-hour, nonstop applications and in environmental areas that are highly regulated.

Standard tilt cab

Operator station tilts a full 70 deg. in only minutes, for wide-open drivetrain-component access.

Backed to the max

The 950K Dozer is fully supported by the legendary John Deere dealer network.

Auto-idle and auto shutdown

Auto-idle automatically reduces engine speed when the machine is not moving and no functions are active. Auto shutdown turns off the engine after extended inactivity.



Keep downtime down with
JOHN DEERE CONNECTED SUPPORT™

Standard JDLink™ telematics with five years of cellular service enables your dealer to monitor your machine's health and react quickly to alerts, often before you even know there is a problem. They can also leverage remote diagnostics and programming capability to further diagnose problems and even update some machine software without a time-consuming trip to the jobsite. At the same time, data from thousands of connected machines flows through John Deere's central Machine Health Monitoring Center, allowing our specialists to identify trends and develop new and improved preventative maintenance and repair protocols that help dealers keep you up and running.

Get valuable insight with
JOHN DEERE WORKSIGHT™

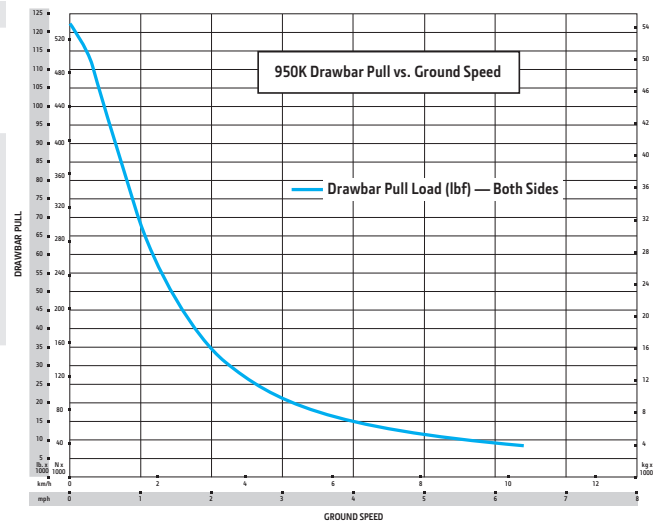
John Deere WorkSight is an exclusive suite of telematics solutions that increases uptime while lowering operating costs. At its heart, JDLink machine monitoring provides real-time utilization data and alerts to help you maximize productivity and efficiency while minimizing downtime. Remote diagnostics enable your dealer to read codes and record performance data without a trip to the jobsite.





950K SPECIFICATIONS

Engine	950K STANDARD	950K LGP	
Blade Type	<i>Outside Dozer (OSD) Semi-U / OSD U / OSD Mechanical Angle (MAB)</i>	<i>Outside Dozer (OSD) Semi-U / OSD Straight / OSD Mechanical Angle (MAB)</i>	
Manufacturer and Model	John Deere PowerTech™ PSS 6090	John Deere PowerTech PSS 6090	<i>Power-Angle-Tilt (PAT)</i> John Deere PowerTech PSS 6090
Non-Road Emission Standard	EPA Final Tier 4 (FT4)/EU Stage IV	EPA FT4/ EU Stage IV	EPA FT4/ EU Stage IV
Displacement	9.0 L (549 cu. in.)	9.0 L (549 cu. in.)	9.0 L (549 cu. in.)
SAE Net Rated Power	198 kW (265 hp) at 1,800 rpm	198 kW (265 hp) at 1,800 rpm	209 kW (280 hp) at 1,800 rpm
Net Peak Torque	1245 Nm (913 lb.-ft.) at 1,300 rpm	1245 Nm (913 lb.-ft.) at 1,300 rpm	1311 Nm (967 lb.-ft.) at 1,300 rpm
Aspiration	Turbocharged and air-to air aftercooled	Turbocharged and air-to-air aftercooled	Turbocharged and air-to- air aftercooled
Air Cleaner	Dual-element dry canister with external rotary ejector pre-cleaner	Dual-element dry canister with external rotary ejector pre-cleaner	Dual-element dry canister with external rotary ejector pre-cleaner
Cooling	STANDARD / LGP		
Type	Variable-speed suction fan with automatic reversing		
Engine Coolant Rating	-37 deg. C. (-34 deg. F)		
Engine Radiator	8.5 fins per in.		
Powertrain	STANDARD	LGP	
Transmission	Automatic, dual-path, hydrostatic (HST) drive; load-sensing feature automatically adjusts speed and power to match changing load conditions; each individually controlled track is powered by a variable-displacement piston pump and motor combination; ground-speed selection buttons on single-lever steering and direction control; independently selectable reverse speed ratios of 100%, 115%, or 130% of forward ground speed; decelerator pedal controls ground speed to stop		
System Relief Pressure	45 850 kPa (6,650 psi)		
Travel Speeds			
Forward and Reverse	11.0 km/h (6.8 mph)		
Maximum (optional)	11.0 km/h (6.8 mph)		
Steering	Single-lever steering, speed, direction control, and counter-rotation; full power turns and infinitely variable track speeds provide unlimited maneuverability and optimum control; HST steering eliminates steering clutches and brakes		
Final Drives	Double-sealed, double-reduction planetary final drives mounted independent of track frame and dozer push frame for isolation from shock loads		
Total Ratio	41.2 to 1		
Blade Type	OSD Semi-U / OSD U / OSD MAB	OSD Semi-U / OSD Straight / OSD MAB	PAT
Drawbar Pull			
Maximum	547 kN (123,000 lb.)	547 kN (123,000 lb.)	547 kN (123,000 lb.)
At 1.9 km/h (1.2 mph)	262 kN (59,000 lb.)	262 kN (59,000 lb.)	276 kN (62,000 lb.)
At 3.2 km/h (2.0 mph)	154 kN (35,000 lb.)	154 kN (35,000 lb.)	164 kN (37,000 lb.)
Brakes			
Service	HST (dynamic) braking stops machine when the direction/steering control lever is moved to neutral or the decelerator is depressed to the end of travel		
Parking	Exclusive safety feature engages wet, multiple-disc brakes whenever the engine stops, the decelerator is depressed to the end of travel, or the park-lock lever is placed in the start or neutral positions and motion is detected; machine cannot be driven with brake applied, reducing wear-out or need for adjustment; spring-applied hydraulic release		



950K SPECIFICATIONS



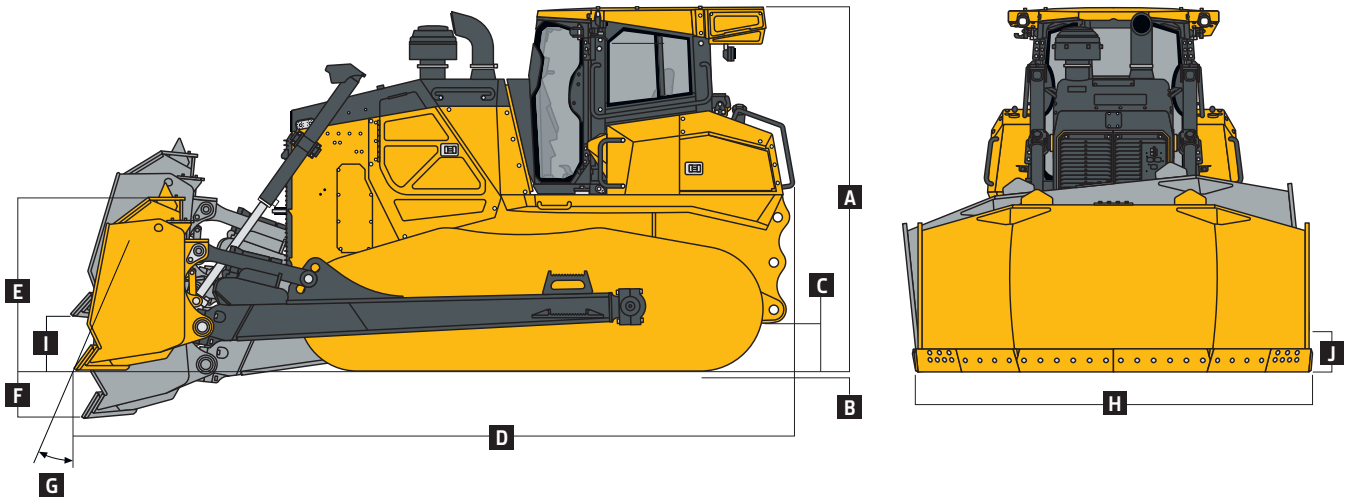
Hydraulics		950K STANDARD / LGP						
Type	Load-sense electrohydraulic (EH) system with variable-displacement piston pump							
Pump Displacement	100 cc							
System Relief Pressure	24 993 kPa (3,625 psi)							
Differential Pressure	1896 kPa (275 psi)							
Maximum Flow at Unloaded High Idle	200 L/m (53 gpm)							
Control	2-function EH T-bar joystick							
Electrical								
Voltage	24 volts							
Capacity								
Battery	950 CCA							
Reserve	190 min.							
Alternator Rating	130 amp							
Lights	Cylinder mounted (2), rear-mounted cab (2), roof-mounted forward facing (2), engine compartment (1), and rear reflectors (2)							
Undercarriage		STANDARD		LGP				
Tracks	Track frame includes undercarriage design with sealed track-adjuster cavity, front and rear track guides, and sprocket guard; John Deere Dura-Trax™ features deep-heat-treated, sealed, and lubricated track links and through-hardened, sealed, and lubricated rollers for maximum wear resistance; sprockets are segmented							
Blade Type		OSD Semi-U / OSD U / OSD MAB		OSD Semi-U / OSD Straight / OSD MAB		PAT		
Track Gauge, Standard	2006.6 mm (79 in.)			2260 mm (89 in.)		2702 mm (106.4 in.)		
Grouser Width (shoe width)	610 mm (24 in.)			910 mm (36 in.)		910 mm (36 in.)		
Chain	Sealed and lubricated				Sealed and lubricated		Sealed and lubricated	
Shoes, Each Side	43			45		45		
Track Rollers, Each Side	7			8		8		
Track Length on Ground	3214 mm (126.5 in.)			3431 mm (135.1 in.)		3431 mm (135.1 in.)		
Ground Contact Area	39 211 cm ² (6,078 sq. in.)			62 719 cm ² (9,721 sq. in.)		62 719 cm ² (9,721 sq. in.)		
Ground Pressure	74 kPa (10.8 psi)			49 kPa (7.1 psi)		52 kPa (7.6 psi)		
Track Pitch	215.9 mm (8.5 in.)			215.9 mm (8.5 in.)		215.9 mm (8.5 in.)		
Operator Station		STANDARD / LGP						
ROPS (ISO 3471 – 2008) and FOPS (ISO 3449 – 2005)								
Serviceability								
Refill Capacities								
Fuel Tank with Lockable Cap	505.5 L (133.5 gal.)							
Diesel Exhaust Fluid (DEF) Tank	22.9 L (6.1 gal.)							
Cooling System with Recovery Tank	57 L (15 gal.)							
Engine Oil with Filter	25 L (6.6 gal.)							
Reservoir with Filter (oil volume of tank only)								
Transmission	149 L (39.44 gal.)							
Hydraulic	87 L (23 gal.)							
Operating Weights		STANDARD		LGP				
<i>Base Weight (includes standard equipment, blade, rollover protective structures [ROPS], full fuel tank, and 79-kg [175 lb.] operator)</i>								
Blade Type		OSD Semi-U	OSD U	OSD MAB	OSD Semi-U	OSD Straight	OSD MAB	PAT
With Track Shoes								
610 mm (24 in.)	29 606 kg (65,300 lb.)	29 941 kg (66,000 lb.)	29 985 kg (66,100 lb.)	—	—	—	—	
910 mm (36 in.)	—	—	—	31 431 kg (69,300 lb.)	31 336 kg (69,100 lb.)	31 900 kg (70,300 lb.)	33 431 kg (73,700 lb.)	
Optional Components								
Front and Door Screens	63 kg (139 lb.)	63 kg (139 lb.)	63 kg (139 lb.)	63 kg (139 lb.)	63 kg (139 lb.)	63 kg (139 lb.)	63 kg (139 lb.)	
Rear Screen	36 kg (80 lb.)	36 kg (80 lb.)	36 kg (80 lb.)	36 kg (80 lb.)	36 kg (80 lb.)	36 kg (80 lb.)	36 kg (80 lb.)	
Side Screens	37 kg (82 lb.)	37 kg (82 lb.)	37 kg (82 lb.)	37 kg (82 lb.)	37 kg (82 lb.)	37 kg (82 lb.)	37 kg (82 lb.)	
Rear Counterweight	1113 kg (2,454 lb.)	1113 kg (2,454 lb.)	1113 kg (2,454 lb.)	1113 kg (2,454 lb.)	1113 kg (2,454 lb.)	1113 kg (2,454 lb.)	1113 kg (2,454 lb.)	
Retrieval Hitch (standard drawbar on counterweight)	68 kg (150 lb.)	68 kg (150 lb.)	68 kg (150 lb.)	68 kg (150 lb.)	68 kg (150 lb.)	68 kg (150 lb.)	68 kg (150 lb.)	
Winch (included 3-roller fairlead)	1,361 kg (3,000 lb.)	1,361 kg (3,000 lb.)	1,361 kg (3,000 lb.)	1,361 kg (3,000 lb.)	1,361 kg (3,000 lb.)	1,361 kg (3,000 lb.)	1,361 kg (3,000 lb.)	
Mounting Plate	795 kg (1,753 lb.)	795 kg (1,753 lb.)	795 kg (1,753 lb.)	795 kg (1,753 lb.)	795 kg (1,753 lb.)	795 kg (1,753 lb.)	795 kg (1,753 lb.)	
Blade Rock Rack and Wear Plate	527 kg (1,162 lb.)	579 kg (1,277 lb.)	—	—	—	—	—	

Operating Weights (continued)		950K STANDARD			950K LGP		
Blade Type	Outside Dozer (OSD) Semi-U	Outside Dozer (OSD) U	OSD Mechanical Angle (MAB)	Outside Dozer (OSD) Semi-U	Outside Dozer (OSD) Straight	OSD Mechanical Angle (MAB)	Power-Angle-Tilt (PAT)
Optional Components (continued)							
Heating, Ventilating, and Air-Conditioning (HVAC)-Powered Precleaner	20 kg (44 lb.)	20 kg (44 lb.)	20 kg (44 lb.)	20 kg (44 lb.)	20 kg (44 lb.)	20 kg (44 lb.)	20 kg (44 lb.)
Track Shoes							
610 mm (24 in.)							
Extreme Duty Trapezoidal	In base* -125 kg (-276 lb.)	In base* -125 kg (-276 lb.)	In base* -125 kg (-276 lb.)	—	—	—	—
660 mm (26 in.)							
Extreme Duty Trapezoidal	206 kg (454 lb.) 79 kg (174 lb.)	206 kg (454 lb.) 79 kg (174 lb.)	206 kg (454 lb.) 79 kg (174 lb.)	—	—	—	—
760 mm (30 in.)							
Moderate Duty Trapezoidal	—	—	—	-520 kg (-1,147 lb.) -624 kg (-1,376 lb.)	-520 kg (-1,147 lb.) -624 kg (-1,376 lb.)	-520 kg (-1,147 lb.) -624 kg (-1,376 lb.)	-520 kg (-1,147 lb.) -624 kg (-1,376 lb.)
910 mm (36 in.)							
Moderate Duty Trapezoidal	—	—	—	In base* -106 kg (-234 lb.)	In base* -106 kg (-234 lb.)	In base* -106 kg (-234 lb.)	In base* -106 kg (-234 lb.)

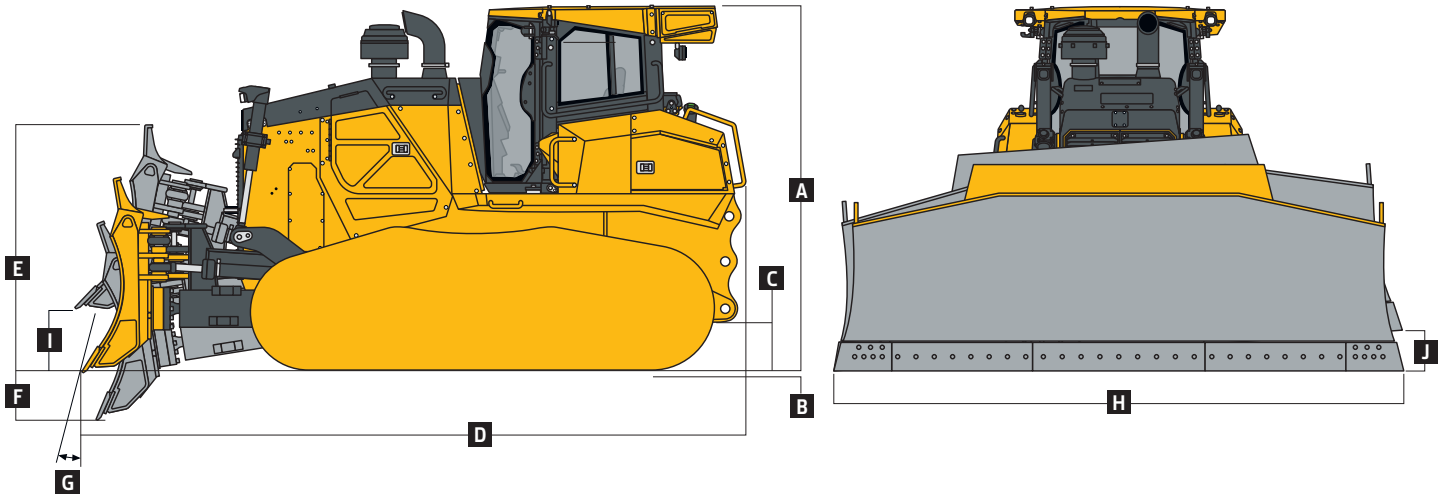
*Included in SAE operating weight.

Machine Dimensions							
A Overall Height to Roof	3427 mm (11 ft. 3 in.)	3427 mm (11 ft. 3 in.)	3427 mm (11 ft. 3 in.)	3427 mm (11 ft. 3 in.)	3427 mm (11 ft. 3 in.)	3427 mm (11 ft. 3 in.)	3427 mm (11 ft. 3 in.)
Overall Height with Limb Risers (including grousers)	3560 mm (11 ft. 8 in.)	3560 mm (11 ft. 8 in.)	3560 mm (11 ft. 8 in.)	3560 mm (11 ft. 8 in.)	3560 mm (11 ft. 8 in.)	3560 mm (11 ft. 8 in.)	3560 mm (11 ft. 8 in.)
B Tread Depth with Single-Bar Grouser (extreme duty or trapezoidal)	71.4 mm (2.8 in.)	71.4 mm (2.8 in.)	71.4 mm (2.8 in.)	71.4 mm (2.8 in.)	71.4 mm (2.8 in.)	71.4 mm (2.8 in.)	71.4 mm (2.8 in.)
C Ground Clearance in Dirt (includes grouser height)	312 mm (12.3 in.)	312 mm (12.3 in.)	312 mm (12.3 in.)	312 mm (12.3 in.)	312 mm (12.3 in.)	312 mm (12.3 in.)	312 mm (12.3 in.)
D Overall Length with Blade	6387 mm (251 in. / 20 ft. 11 in.)	6639 mm (261 in. / 21 ft. 9 in.)	6351 mm (250 in. / 20 ft. 10 in.)	6638 mm (261 in. / 21 ft. 9 in.)	6458 mm (254 in. / 21 ft. 2 in.)	6615 mm (260 in. / 21 ft. 8 in.)	6505 mm (256 in. / 21 ft. 4 in.)
With Blade and Ripper	8164 mm (321 in. / 26 ft. 9 in.)	8416 mm (331 in. / 27 ft. 7 in.)	8128 mm (320 in. / 26 ft. 8 in.)	8415 mm (331 in. / 27 ft. 7 in.)	8235 mm (324 in. / 27 ft. 0 in.)	8392 mm (330 in. / 27 ft. 6 in.)	8182 mm (322 in. / 26 ft. 10 in.)
Without Ripper and Blade	5159 mm (203 in. / 16 ft. 11 in.)	5159 mm (203 in. / 16 ft. 11 in.)	5159 mm (203 in. / 16 ft. 11 in.)	5312 mm (209 in. / 17 ft. 5 in.)	5312 mm (209 in. / 17 ft. 5 in.)	5312 mm (209 in. / 17 ft. 5 in.)	4950 mm (195 in. / 16 ft. 3 in.)
With Ripper (no blade)	6936 mm (273 in. / 22 ft. 9 in.)	6936 mm (273 in. / 22 ft. 9 in.)	6936 mm (273 in. / 22 ft. 9 in.)	7089 mm (279 in. / 23 ft. 3 in.)	7089 mm (279 in. / 23 ft. 3 in.)	7089 mm (279 in. / 23 ft. 3 in.)	6556 mm (258 in. / 21 ft. 6 in.)
With Winch and Fairlead Rollers	7603 mm (299 in. / 24 ft. 11 in.)	7855 mm (309 in. / 25 ft. 9 in.)	7567 mm (298 in. / 24 ft. 10 in.)	7854 mm (309 in. / 25 ft. 9 in.)	7674 mm (302 in. / 25 ft. 2 in.)	7831 mm (308 in. / 25 ft. 8 in.)	7566 mm (298 in. / 24 ft. 10 in.)
E Blade Lift Height	1033 mm (41 in. / 3 ft. 5 in.)	1033 mm (41 in. / 3 ft. 5 in.)	1129 mm (44 in. / 3 ft. 8 in.)	1332 mm (52 in. / 4 ft. 4 in.)	1332 mm (52 in. / 4 ft. 4 in.)	1257 mm (49 in. / 4 ft. 1 in.)	1133 mm (44.6 in. / 3 ft. 8.6 in.)
F Blade Digging Depth	778 mm (31 in.)	778 mm (31 in.)	732 mm (29 in.)	664 mm (26 in.)	664 mm (26 in.)	679 mm (27 in.)	566 mm (22.3 in.)
G Blade Cutting-Edge Angle							
Standard	50.3 to 57.5 deg.	50.3 to 57.5 deg.	58.5 deg.	50.3 to 57.5 deg.	53.0 to 60.0 deg.	58.5 deg.	53.4 to 60.0 deg.
Power Pitch	44.4 to 63.4 deg.	44.4 to 63.4 deg.	—	44.4 to 63.4 deg.	47.0 to 60.0 deg.	—	—
H Blade Width (including cast end bits)	3911 mm (154 in. / 12 ft. 10 in.)	3886 mm (153 in. / 12 ft. 9 in.)	4509 mm (178 in. / 14 ft. 10 in.) ⁶	4572 mm (180 in. / 15 ft. 0 in.)	4509 mm (178 in. / 14 ft. 10 in.)	5184 mm (204 in. / 17 ft. 0 in.) ⁶	4674 mm (184 in. / 15 ft. 4 in.)
I Blade Height	1524 mm (60 in. / 5 ft. 0 in.)	1580 mm (62 in. / 5 ft. 2 in.)	1189 mm (47 in. / 3 ft. 11 in.)	1524 mm (60 in. / 5 ft. 0 in.)	1524 mm (60 in. / 5 ft. 0 in.)	1227 mm (48 in. / 4 ft. 0 in.)	1439 mm (57 in. / 4 ft. 9 in.)
SAE Capacity	7.2 m ³ (9.4 cu. yd.)	8.6 m ³ (11.2 cu. yd.)	—	8.5 m ³ (11.1 cu. yd.)	7.4 m ³ (9.7 cu. yd.)	—	6.6 m ³ (8.6 cu. yd.)
Blade Weight	2121 kg (4,676 lb.)	2452 kg (5,406 lb.)	2761 kg (6,087 lb.) ⁶	2396 kg (5,282 lb.)	2301 kg (5,073 lb.)	3074 kg (6,777 lb.) ⁶	2525 kg (5,567 lb.)
Assembly Weight (without blade)							
Push Beam	2049 kg (4,517 lb.)	2049 kg (4,517 lb.)	1788 kg (3,942 lb.)	2352 kg (5,185 lb.)	—	2142 kg (4,722 lb.)	—
C-Frame/Push Beam	—	—	—	—	2352 kg (5,185 lb.)	—	2400 kg (5,291 lb.)
Blade Angle	—	—	—	—	—	—	25 mm (1 in.)
Overall Width with Blade Angled	—	—	—	—	—	—	4241 mm (167 in. / 13 ft. 11 in.)
J Blade Tilt	800 mm (31 in.)	800 mm (31 in.)	783 mm (31 in.)	909 mm (3 ft. 0 in.)	909 mm (3 ft. 0 in.) [†]	790 mm (31 in.)	640 mm (25 in.) [†]
Cut Reach	—	—	486 mm (19 in.)	—	—	522 mm (21 in.)	—
Width Over Track	2616 mm (103 in. / 8 ft. 7 in.) [*]	2616 mm (103 in. / 8 ft. 7 in.)	2616 mm (103 in. / 8 ft. 7 in.)	3175 mm (125 in. / 10 ft. 5 in.) [*]	3175 mm (125 in. / 10 ft. 5 in.)	3175 mm (125 in. / 10 ft. 5 in.)	3617 mm (142 in. / 11 ft. 10 in.)
Cast Reach	—	—	986 mm (39 in. / 3 ft. 3 in.)	—	—	1015 mm (40 in. / 3 ft. 4 in.)	—
Width Over Trunnions	3231 mm (127 in. / 10 ft. 7 in.)	3231 mm (127 in. / 10 ft. 7 in.)	3231 mm (127 in. / 10 ft. 7 in.)	3565 mm (140 in. / 11 ft. 8 in.)	3565 mm (140 in. / 11 ft. 8 in.)	3565 mm (140 in. / 11 ft. 8 in.)	—

*No trunnions. / [†]Uses tilt jack. / ⁶Including straight end bits. / ⁶With cylinders and struts.



950K STANDARD / LGP DOZER WITH OUTSIDE DOZER (OSD) BLADE



950K LGP DOZER WITH POWER-ANGLE-TILT (PAT) BLADE

Rear Ripper 950K STANDARD / LGP

Multi-shank (3) parallelogram ripper with hydraulic pitch adjustment

Weight 2669 kg (5,884 lb.)

K Maximum Penetration 650 mm (26 in.)

L Maximum Clearance Under Tip 752 mm (30 in.)

M Added Length, Lowered (transport) 2201 mm (87 in. / 7 ft. 3 in.)
Position

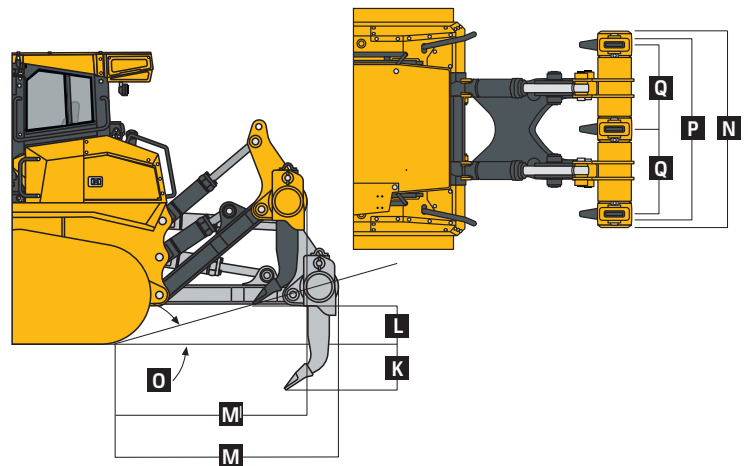
M^I Added Length, Raised Position 1883 mm (74 in. / 6 ft. 2 in.)

N Overall Beam Width 2162 mm (85 in. / 7 ft. 1 in.)

O Slope Angle (full raise) 32.4 deg.

P Ripping Width 2052 mm (81 in. / 6 ft. 9 in.)

Q Distance Between Shanks 940 mm (37 in. / 3 ft. 1 in.)



Additional equipment

Key: ● Standard ▲ Optional or special

See your John Deere dealer for further information.

950K Engine

- Meets EPA Final Tier 4/EU Stage IV emissions
- John Deere PowerTech™ PSS 6090 9.0L engine
- Wet-sleeve cylinder liners
- Eco mode
- Exhaust stack, black
- ▲ Exhaust stack, chrome
- Electronic control with automatic engine protection
- Turbocharged and air-to-air aftercooled
- Dual-element dry canister with external rotary ejector precleaner
- Programmable auto engine shutdown
- Automatic turbo cool-down timer
- ▲ Severe-duty fuel lines and fittings
- ▲ Engine coolant heater, 120 volt
- 130-amp alternator

Cooling

- Engine coolant rated -37 deg. C (-34 deg. F)
- Automatic, programmable reversing fan
- Engine radiator, 8.5 fins per in.

Powertrain

- Dual-path hydrostatic (HST) transmission
- Selectable reverse-speed ratios
- Operator-selectable decelerator function (hydrostats and engine or hydrostats only)
- Single-lever steering with counter-rotate function
- Full power turns with infinitely variable track speed
- HST (dynamic) service brakes
- Wet, multi-disc parking brake

Hydraulics

- Load-sense electrohydraulic (EH) system with variable-displacement piston pump
- ▲ 2-spool EH control valve for outside dozer (OSD)
- ▲ 3-spool EH control valve for OSD with single auxiliary
- ▲ 4-spool EH control valve for OSD with dual auxiliary

950K Hydraulics (continued)

- Hydrau™ All-Season Hydraulic Oil, -25 deg. C to 50 deg. C (-13 deg. F to 122 deg. F)
- ▲ Hydrau™ XR Hydraulic Oil, -40 deg. C to 40 deg. C (-40 deg. F to 104 deg. F)
- ▲ Power pitch for OSD
- ▲ Hydraulic-winch-ready kit

STD LGP Undercarriage

- ● Heavy-duty undercarriage design
- ● Sealed track adjuster cavity
- Standard track OSD frame, 2180-mm (86 in.) track gauge
- Extreme-duty shoes, 610 mm (24 in.)
- ▲ Extreme-duty shoes, 660 mm (26 in.)
- ▲ Extreme-duty shoes, trapezoidal, 610 mm (24 in.)
- ▲ Extreme-duty shoes, trapezoidal, 660 mm (26 in.)
- ▲ Moderate-duty shoes, 760 mm (30 in.)
- ▲ Moderate-duty shoes, trapezoidal, 760 mm (30 in.)
- Moderate-duty shoes, 910 mm (36 in.)
- ▲ Moderate-duty shoes, trapezoidal, 910 mm (36 in.)
- ▲ ▲ Full-length rock guards

Operator's Station

- Enclosed cab with air conditioner/heater
- Retractable seat belt, 76 mm (3 in.) (conforms to SAE J386)
- Air-suspension cloth seat
- ▲ Air-suspension heated deluxe seat
- AM/FM radio
- ▲ HVAC-powered precleaner
- Tilting cab
- 178-mm (7 in.) color, multi-language Primary Display Unit (PDU)
- Backup alarm
- 12-volt accessory plug
- Keyless start

950K Overall Vehicle

- Environmental drain package
- Fluid-sample valves
- JDLink™ wireless machine communication system (available in specific countries; see your local dealer for details)
- ▲ Quick service ports (HST, hydraulic, and engine oil, and coolant)
- ▲ Fast-fuel system
- Halogen lights (6 total): cylinder mounted (2); rear cab mounted (2); and roof mounted, front facing (2)
- Reflectors, rear facing (2)
- ▲ LED work lights (6)
- ▲ Deluxe LED work lights (10)
- ▲ Beacon light
- Grade-control-ready EH hydraulics
- ▲ Topcon-ready interface package
- ▲ Trimble-ready interface package
- ▲ Leica-ready interface package

Attachments

- ▲ U Blade, 3886 mm (153 in.)
- ▲ Semi-U Blade, 3911 mm (154 in.)
- ▲ Mechanical-Angle Blade, 4509 mm (178 in.)
- ▲ U Blade, 3886 mm (153 in.), with rock rack and wear plate
- ▲ Semi-U Blade, 3911 mm (154 in.), with rock rack and wear plate
- ▲ Semi-U Blade, 3911 mm (154 in.), with push plate
- ▲ Power-Angle-Tilt Blade, 4674 mm (184 in.)
- ▲ LGP Semi-U Blade, 4572 mm (180 in.)
- ▲ LGP Straight Blade, 4509 mm (178 in.)
- ▲ LGP Mechanical-Angle Blade, 5184 mm (204 in.)
- Standard end bits and cutting edges
- ▲ Heavy-duty end bits
- ▲ Heavy-duty cutting edges
- ▲ Cast end bits
- ▲ Ripper, multi-shank
- ▲ Rear counterweight, 1113 kg (2,454 lb.)
- ▲ Retrieval hitch

Net engine power is with standard equipment including air cleaner, exhaust system, alternator, and cooling fan at test conditions specified per ISO9249. No derating is required up to 3050-m (10,000 ft.) altitude. Specifications and design subject to change without notice. Wherever applicable, specifications are in accordance with SAE standards. Except where otherwise noted, these specifications are based on a unit with standard equipment, modular ROPS/cab, full fuel tank, and 79-kg (175 lb.) operator.

